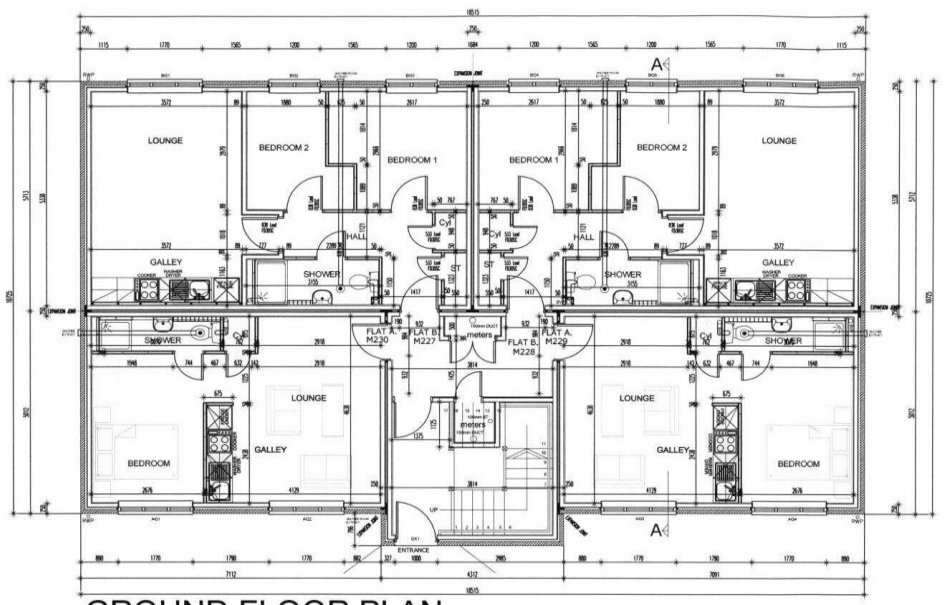


Millbank Lane, Thornaby



GROUND FLOOR PLAN

- ELECTRICAL / PLUMBING KEY**
- ⬇ WALL LIGHT
 - ⬇ WATER-PROOF LIGHT FITTING
 - ⬇ CONSUMER UNIT
 - ⬇ HEATER POSITION
 - ⬇ ROOM THERMOSTAT
 - ⬇ SHOWER POINT
 - ⬇ SMOKE DETECTOR
 - ⬇ COOKER UNIT
 - ⬇ IMMERSION
 - ⬇ BELL PUSH
 - ⬇ SWITCH PROGRAMMER
 - ⬇ MULTI-GANG SWITCH
 - ⬇ LOW LEVEL SWITCHED SO
 - ⬇ DOOR ENTRY SYSTEM
 - ⬇ FIRE ALARM POINT (BREAK-GLASS)
 - ⬇ PHOTO CELL
 - ⬇ HEAT DETECTOR
 - ⬇ EXIT SIGN
 - ⬇ HIGH LEVEL SO
 - ⬇ TWIN SWITCHED SOCKET OUTLET
 - ⬇ FUSED SWITCHED SPUR
 - ⬇ INCOMING BT POINT
 - ⬇ GAS POINT
 - ⬇ SINGLE POLE LIGHT SWITCH
 - ⬇ DOUBLE POLE LIGHT SWITCH
 - ⬇ TWO WAY LIGHT SWITCH
 - ⬇ LIGHT POINT
 - ⬇ CEILING MOUNTED EXTRACT 15L/SEC
 - ⬇ ISOLATOR SWITCH FITTED ABOVE BSOM HEAD
 - ⬇ COMBINED LIGHT & CEILING MOUNTED EXTRACT
 - ⬇ ENERGY EFFICIENT LIGHT
 - ⬇ TENANT HANDSET FOR DOOR ENTRY SYSTEM
 - ⬇ FIRE ALARM PANEL
 - ⬇ FIRE ALARM BELL (HIGH LEVEL)
 - ⬇ DUAL EMERGENCY LIGHT FITTING

PROPRIETARY FIRE COLLARS TO BE PROVIDED TO ALL PIPES PASSING THRU COMPARTMENT FLOORS, 1hr fr.

STOCKTON BOROUGH COUNCIL
PLANNING
20 JUN 2007
DATE RECEIVED

07 / 18 91 / --

JOB		Millbank Lane, Thornaby		SCALE	1:100	DRAWN	CD	CHKD	RC
TITLE		Block 1 - First Floor Layout				DATE	07.06.07	DATE	07.06.07
REV	DATE	DESCRIPTION	BY	G2 1200 Century Way, Thorpe Park, Leeds, LS15 8ZA Telephone 0113 2515121 Fax 0113 2515551		G2		DWG No. G2/Thornaby/07 Rev. /	